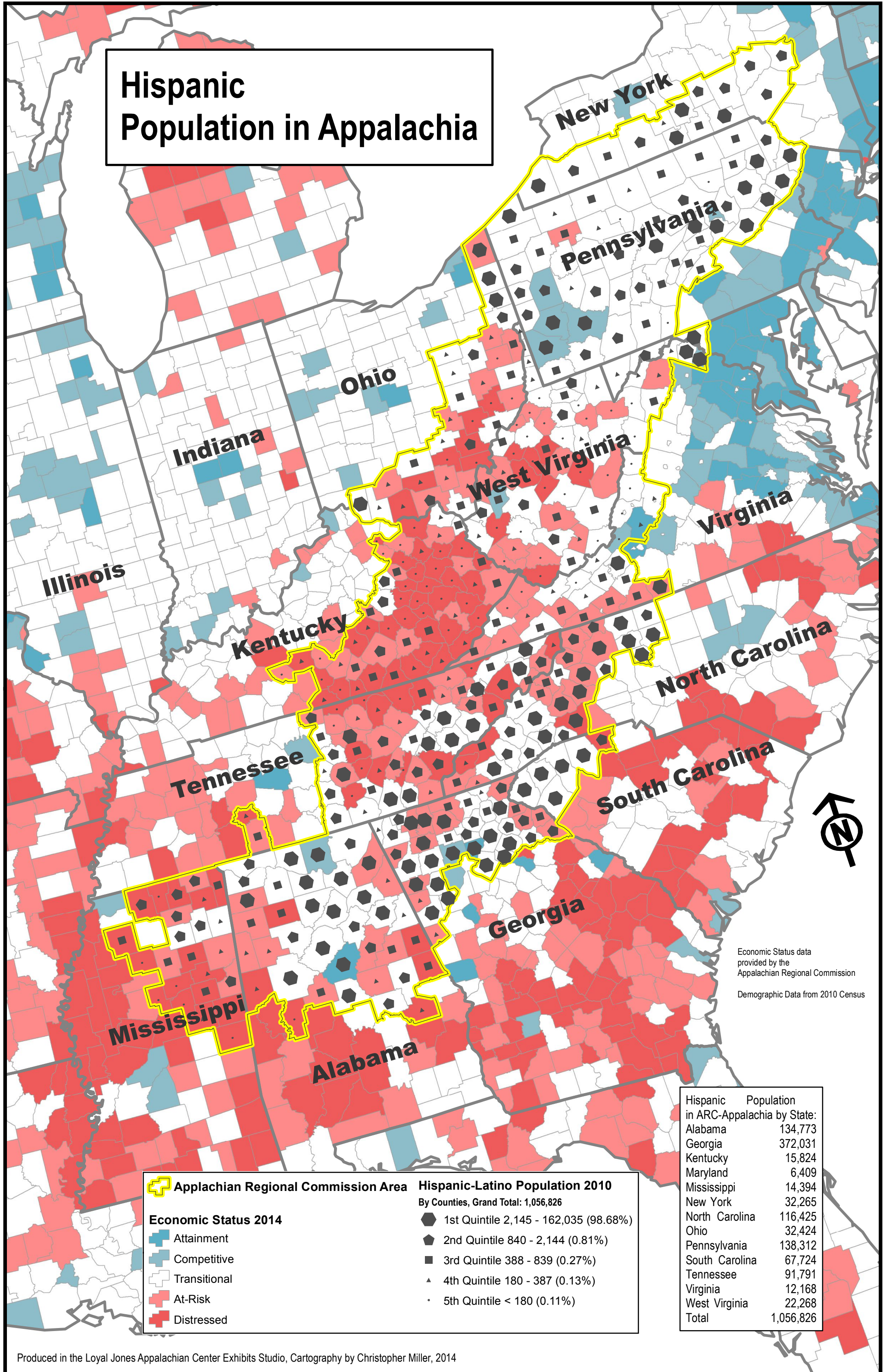


# Hispanic Population in Appalachia



Economic Status data provided by the Appalachian Regional Commission  
Demographic Data from 2010 Census



**Appalachian Regional Commission Area**

**Economic Status 2014**

- Attainment
- Competitive
- Transitional
- At-Risk
- Distressed

**Hispanic-Latino Population 2010**  
By Counties, Grand Total: 1,056,826

- 1st Quintile 2,145 - 162,035 (98.68%)
- ◆ 2nd Quintile 840 - 2,144 (0.81%)
- 3rd Quintile 388 - 839 (0.27%)
- ▲ 4th Quintile 180 - 387 (0.13%)
- 5th Quintile < 180 (0.11%)

Hispanic Population in ARC-Appalachia by State:	Population
Alabama	134,773
Georgia	372,031
Kentucky	15,824
Maryland	6,409
Mississippi	14,394
New York	32,265
North Carolina	116,425
Ohio	32,424
Pennsylvania	138,312
South Carolina	67,724
Tennessee	91,791
Virginia	12,168
West Virginia	22,268
<b>Total</b>	<b>1,056,826</b>